

PLANT SERVICES

CLARENCE RICHARD Services

3908 Tonkawood Road, Minnetonka, MN 55345

800-372-7731 952-939-6000 FAX 952-939-1026

e mail clarence@clarencerichard.com web www.clarencerichard.com

Specs and Setup- Revised 4-26-06

Filler Feeder Silo with Continuous Weigh Flow Scale SN 2003 ...

User must store dry flowable product... When aeration is necessary – User must supply **Dry Air** to keep material flowing through Silo, Feeder, Flow Scale, Augers, Hose, etc.

Silo must be emptied before setting down horizontally. Silo must be thoroughly cleaned of all material stored.

System Responsibility: User is responsible for understanding the equipment and their requirements. CRS shall make every effort to make equipment available to potential user for their inspection. User may request in writing for CRS to help adapt equipment to their specific need. CRS shall respond in writing.

Portable 450 bbl – (1800 cubic feet) with bag house mounted on 20 foot stand
24,000 lbs empty..

When in Transport Position .. Portable Silo 13.5' High 10'6" Wide by 54' long.





The following paragraph must be confirmed by your professional engineers to assure this works for your application.

Silo Concrete Pad – Bolt Leg Feet to pad
14' x 14' x 10" deep with rebar criss-crossed on 3' centers.
45 ton Crane ..80 foot boom..

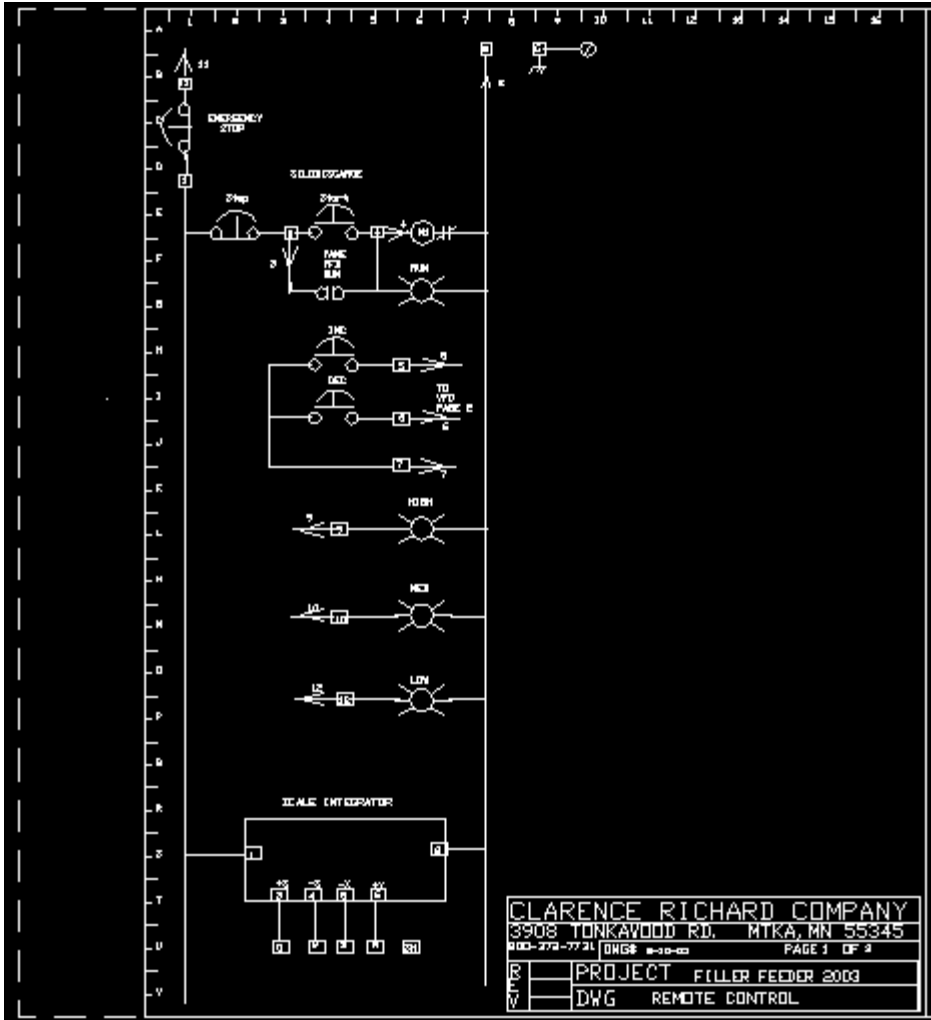
Auger Discharge Height is approximately 15' extending out from silo side about 14.5'.



Remote Control Panel (175 feet cord).

Emergency Stop
Start/Stop Switch
Manual Increase/Decrease Switch for Vane Feeder Speed
High Level Light
Mid Level Light
Low Level Light
Flow Rate Indication (TPH) and Tons Totalizer





Local Control and Motor Control-Power Panel

Electric:

480 volt 3 phase... 60 amp (when using 20 hp discharge auger- 20 foot -12 ") – 30 amp service when using vane feeder only.

Air:

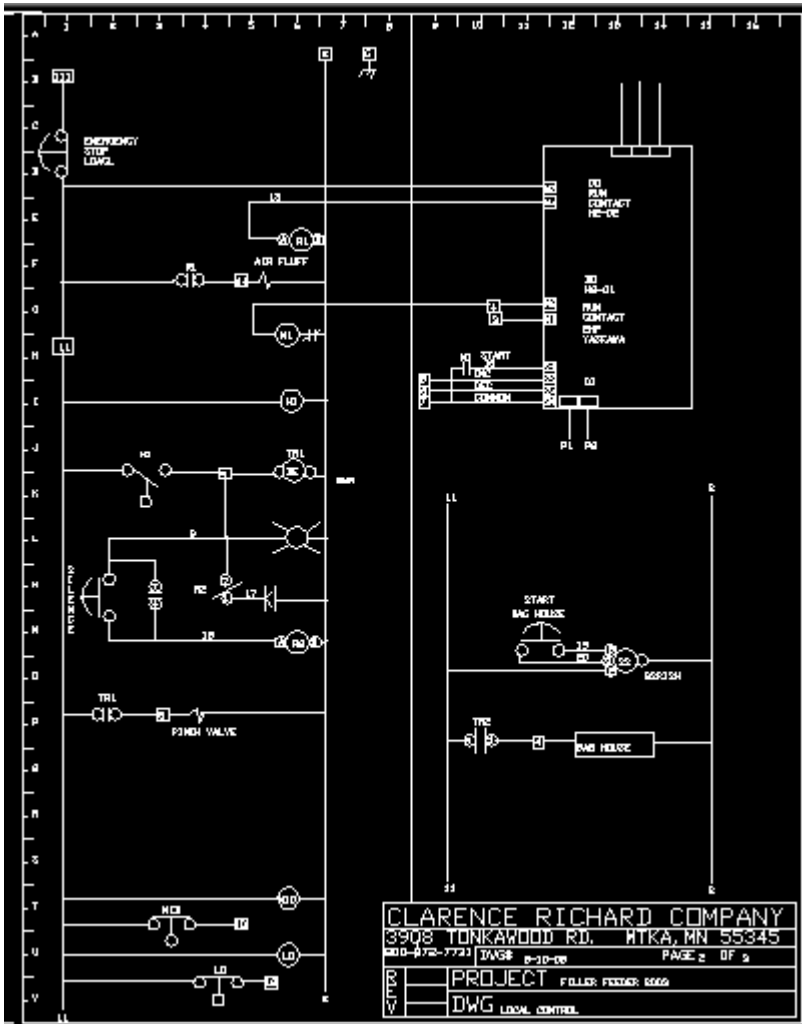
8 to 15 psi regulated dry air

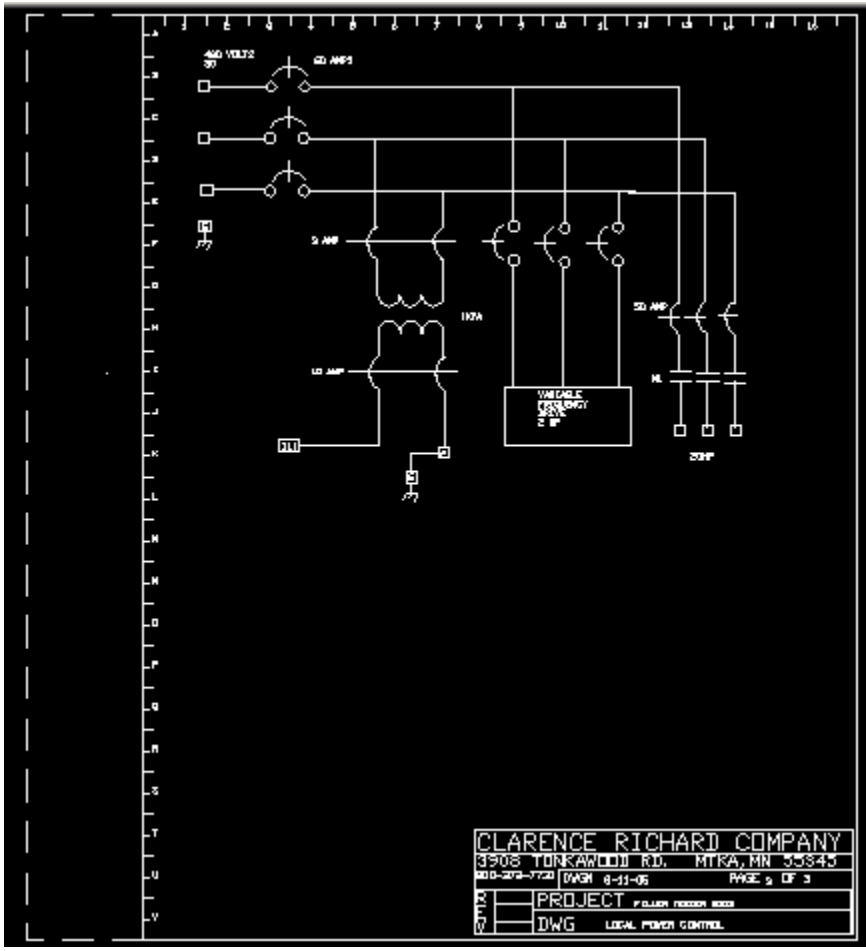


Emergency Stop
Start Baghouse Pulsing
High Level Strobe and Horn (Silence Button) – with Pinch Valve Protection
Mid Level Light
Baghouse Pressure Drop Indicator









CLARENCE RICHARD COMPANY	
3908 TONKAWOOD RD. MTRK, MN 55845	
608-272-7720	DWG# 8-11-05 PAGE 2 OF 3
DATE	PROJECT FAULKNER BLDG
DWG	LOCAL PANEL CONTROL

Flow Scale mounted directly under vane feeder.



Operator has choice of discharging flow scale material down a 7" hose to wherever or discharging into positioned provided discharge auger.



Auger must be out of way of hanging 7" hose for material Calibration. Flow Scale must be material calibrated in a 55 gallon drum or larger with a scale to weigh it.



Storage..7” hose--- 20 ‘ Long—Remote control shown without protective bag—Chains for suspending Auger – Fall Harnesses

